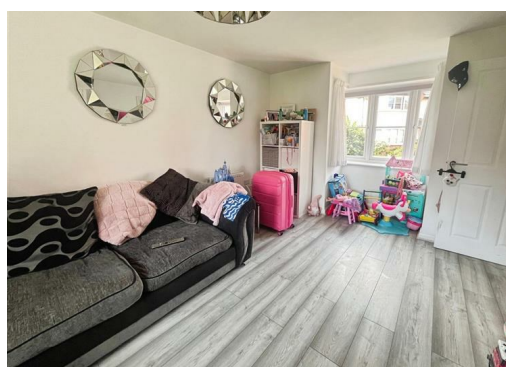
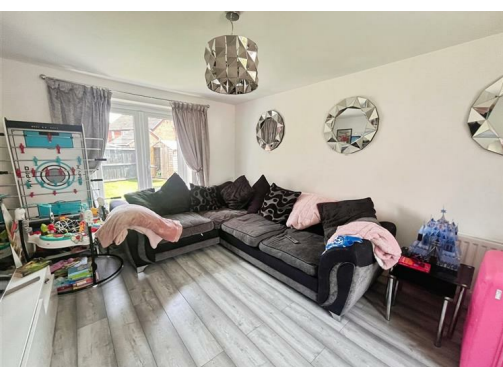




**Hazel Way, Edleston, CW5 5XG**

**£324,000**

**EXCELLENT VALUE FOR MONEY!!!** We are delighted to be able to present to you this beautifully presented and maintained 3 bedroom detached house, situated on the outskirts of Nantwich!





# 32 Hazel Way, Edleston, CW5 5XG

## GROUND FLOOR

### Lounge 15'7" x 10'11" (4.76m x 3.35m)

High quality wood effect laminate flooring with patio doors leading to the rear garden, curtains and blind

### Kitchen/diner 15'5" x 11'6" (4.71m x 3.51m)

Tile flooring with patio doors leading to the rear garden, spotlighting and blind. A range of fitted kitchen units, worktops and integrated kitchen appliances including oven, hob, hood, dishwasher and fridge-freezer

### WC/cloaks

Tile flooring with 2 piece bathroom suite in white and radiator

## FIRST FLOOR

### Bedroom 9'0" x 12'2" (2.76m x 3.73m)

Carpet flooring with window to the front elevation, fitted wardrobes and blind

### En-suite

Tile flooring with 2 piece bathroom suite in white, separate showering enclosure, heated towel rail and partially tiled decor

### Bedroom 8'5" x 10'11" (2.58m x 3.35m)

Carpet flooring with window to the front elevation and blind

### Bedroom 10'11" x 6'10" (3.35m x 2.09m)

Carpet flooring with window to the rear elevation and blind

### Bathroom

Tile flooring with 3 piece bathroom suite in white, shower over bath with glass splash-back screen, spotlighting and heated towel rail

## EXTERNAL

Well presented and private rear

garden, enclosed by panel fencing with laid to lawn and patio area. Envious corner plot position with detached single garage and private driveway.

